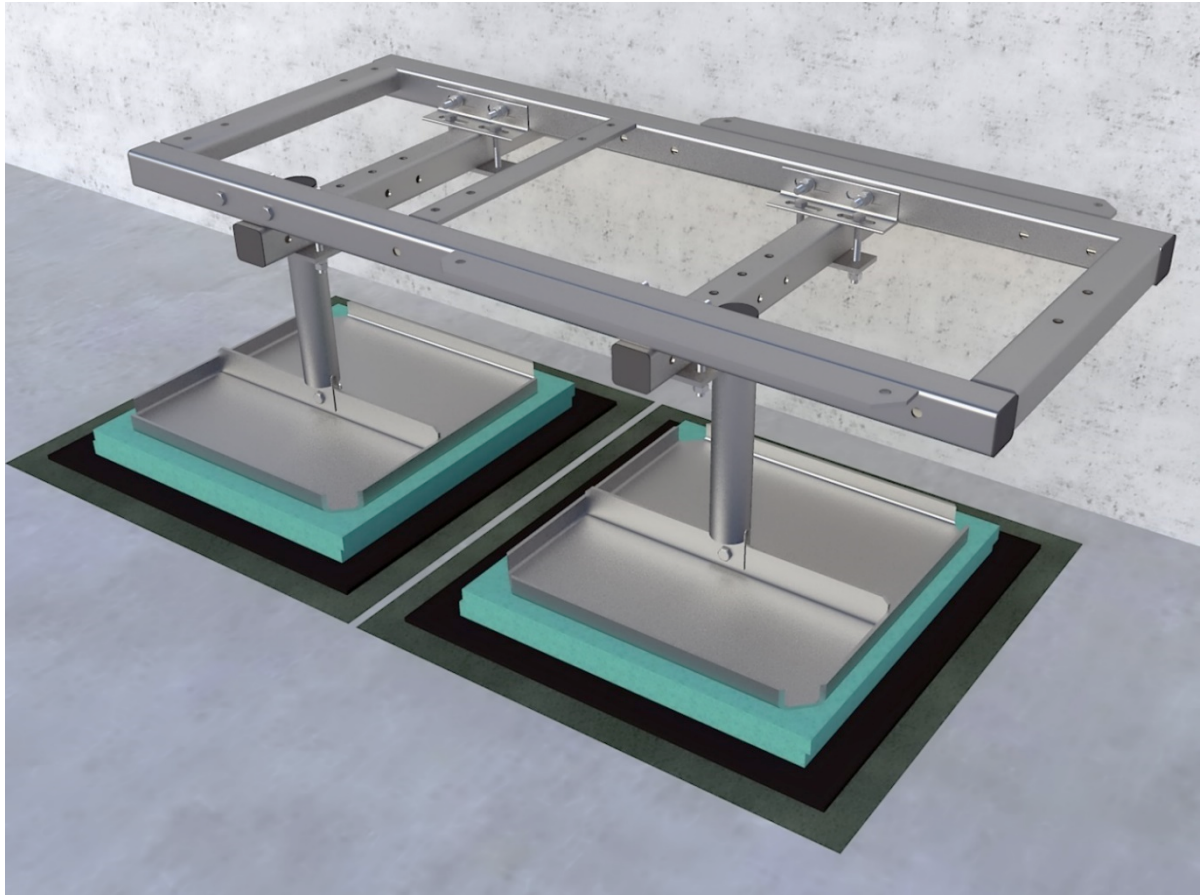


# **GR 129-01**

## **RAMME FOR 2STK RU/LR 1,44M**

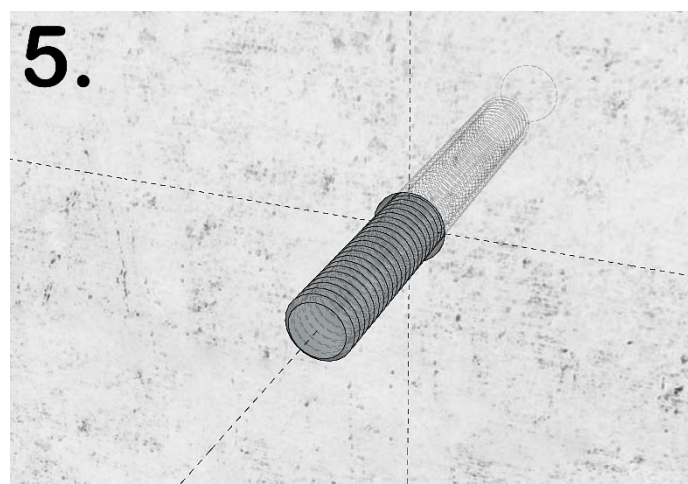
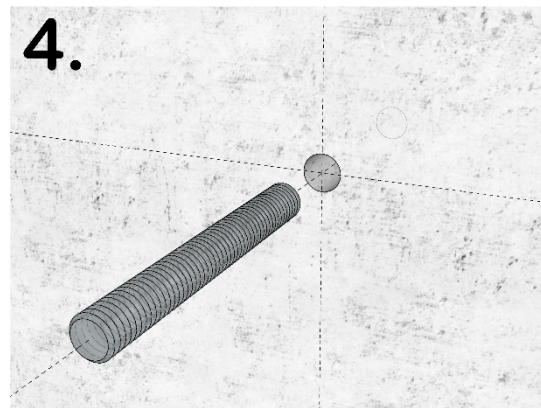
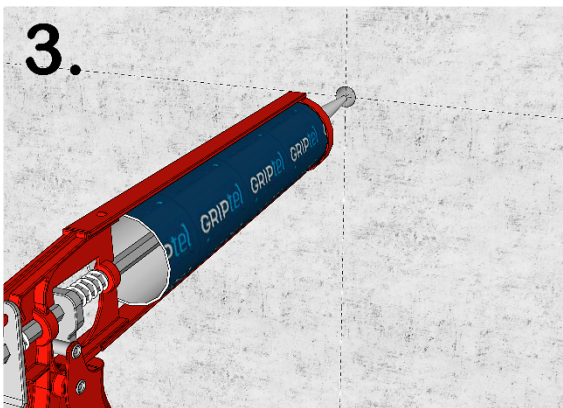
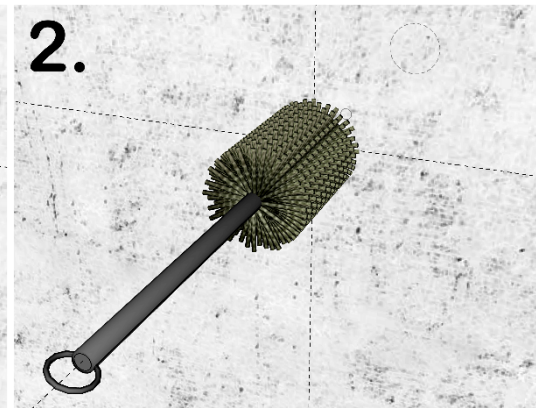
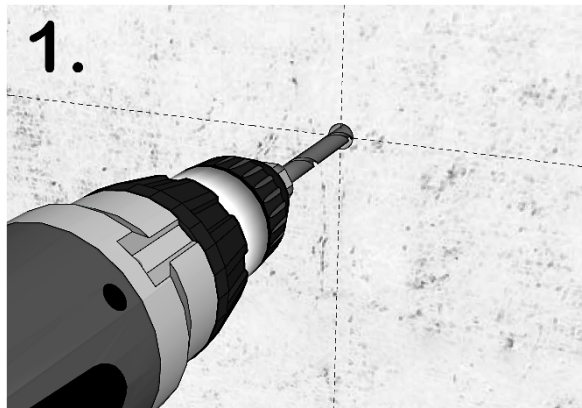
### OVERVIEW



### 1. PREPARING FOR THE INSTALLATION

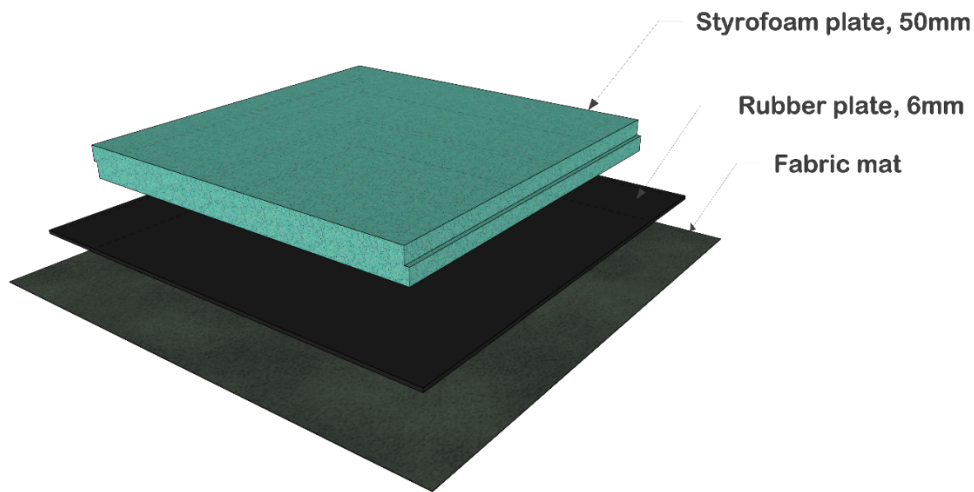


1. Drill hole to specified diameter and depth
2. Blow out the dust and clean dust and debris using brushing
3. Inject adequate MULTICOMPOUND/ Order from our web-shop: "[Pluggmasse/Pluggmasse MSC](#)"  
(if the type of the wall requires, use appropriate anchors/ Order from our web-shop: "[SIHYLSTER](#)")
4. Insert threaded rod and cut excess part of the stud



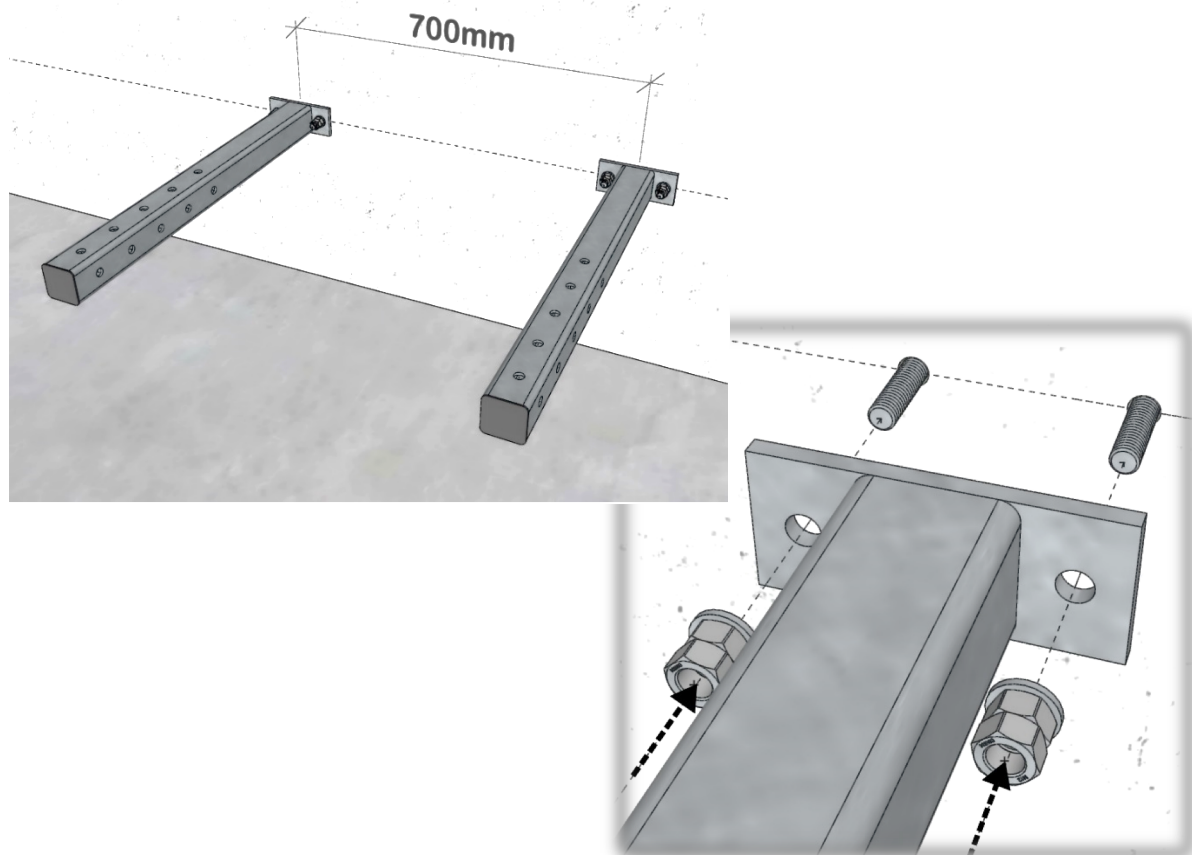
### 2. PREPARE FLORING

**i** Protect the surface from the damaging using Styrofoam plate, rubber surface and fabric mat below each supporting plate



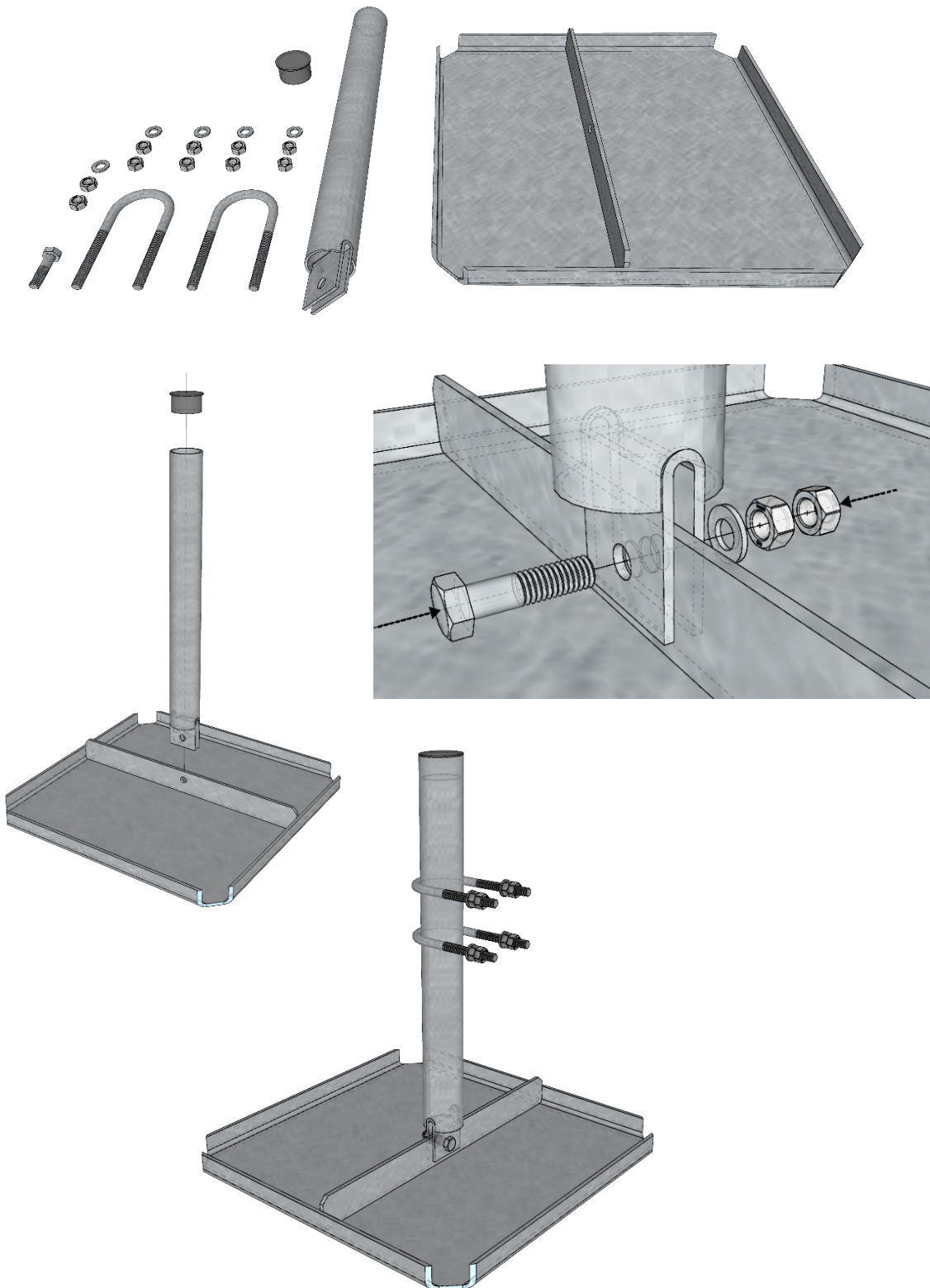
### 3. SUPPORTING HORIZONTAL BEAM

**i** Install 2x horizontal beam **GR120-04-P15** on the prepared chemical anchors on the wall;  
(Recommended: Distance between two beams is 700mm for Platform GR129-01)



### 4. Lastfordelende plate m. Ø60 rør - L=600mm; GR120-11-P19

- i** Place the central tube to the vertical position on the base frame;  
Cut excess part of the tube after installation;

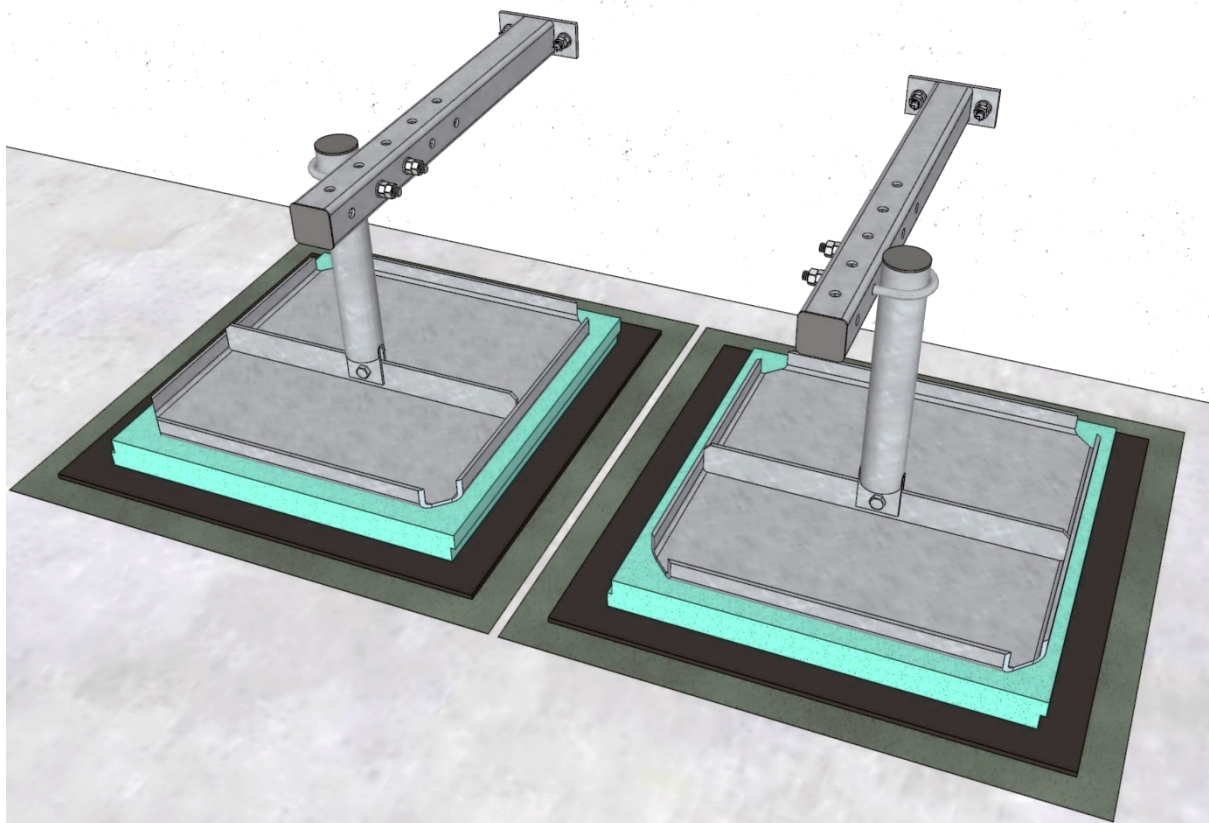
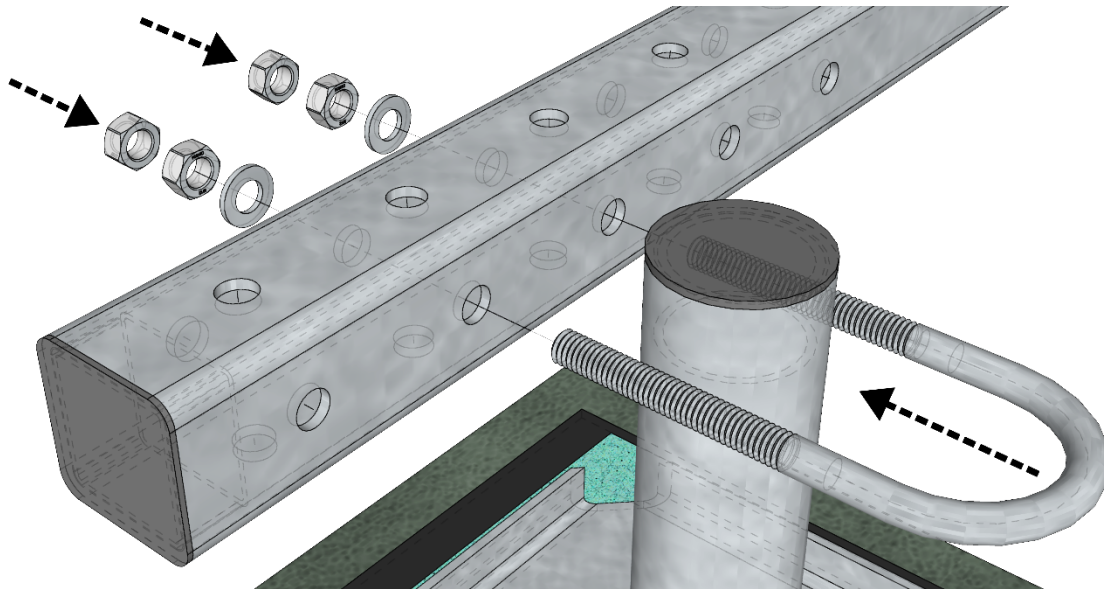




## 5. VERTICAL SUPPORTS

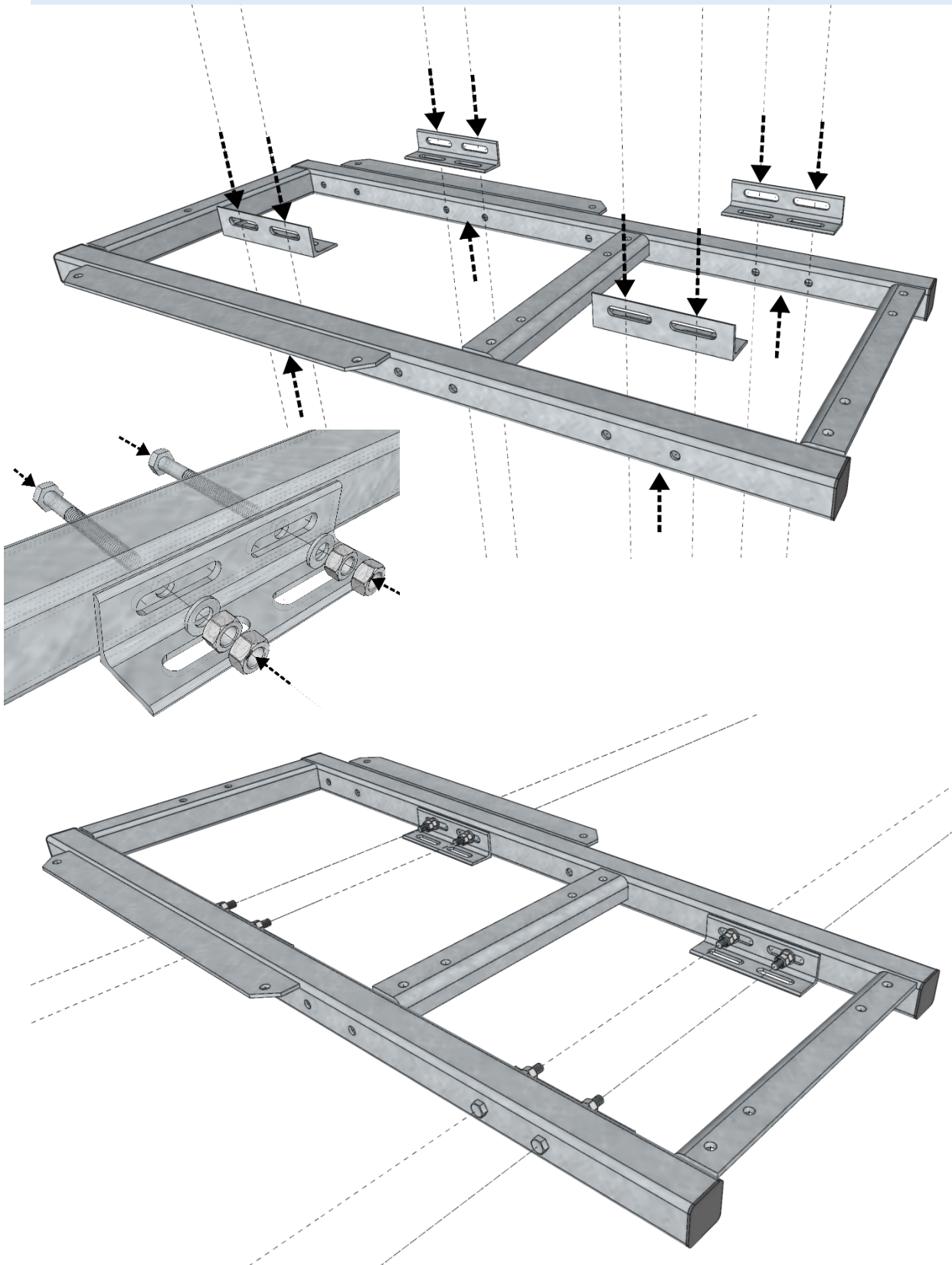
**i** Install 2x **GR120-11-P19** vertical supports with mounting plate to horizontal beams **GR120-04-P15**  
(Exact position will be determined during installation)

Supporting pipes needs to be cut and level with top of the horizontal supporting beam



### 6. EQUIPMENT FRAME

**i** Prepare frame **GR120-12-P26** by adding 4x fixing brackets **GR120-04-P60** using 8x M12x100 bolts  
(Distance between fixing brackets should follow distance between horizontal beams – 700mm)

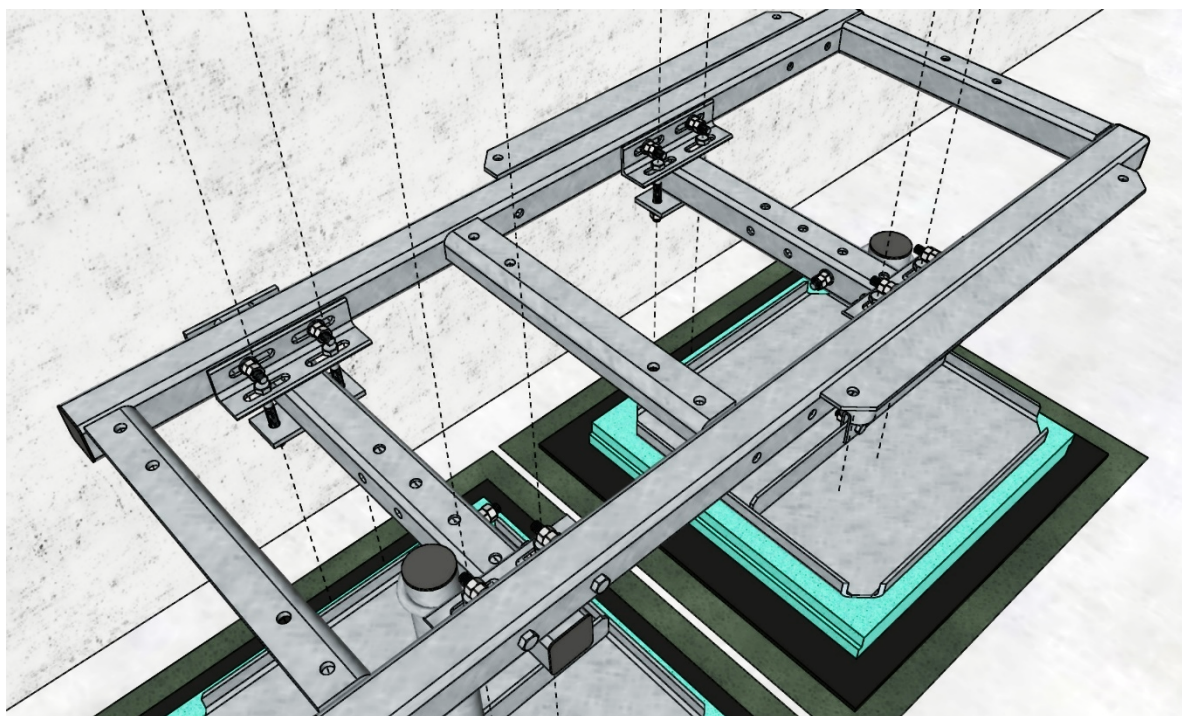
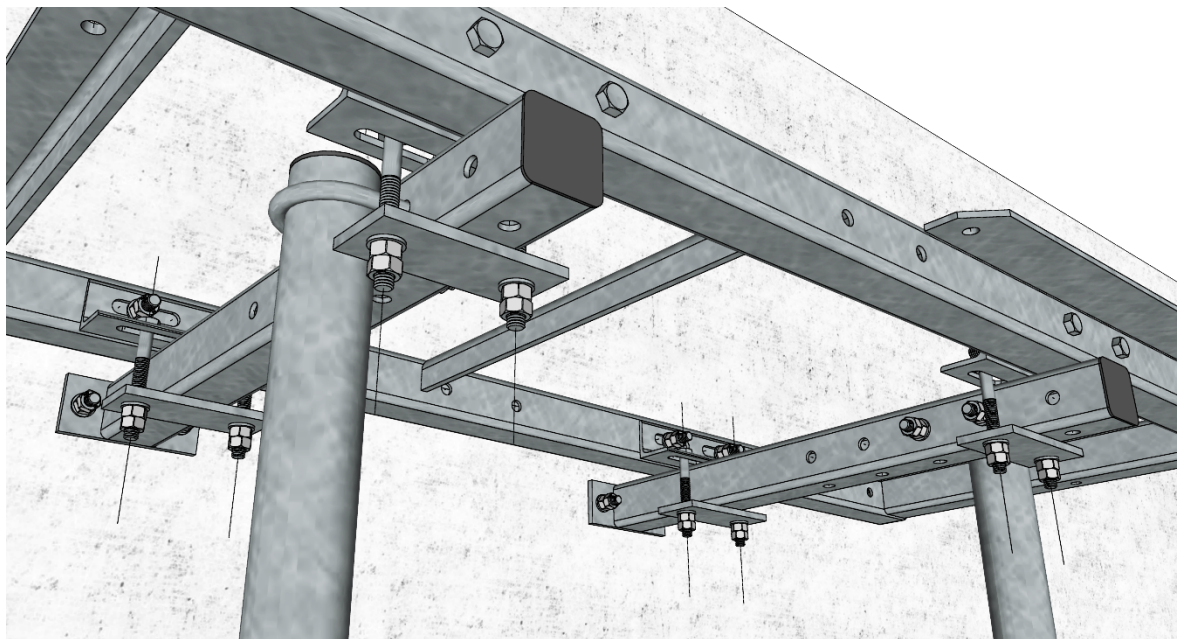




## MOUNTING INSTRUCTION

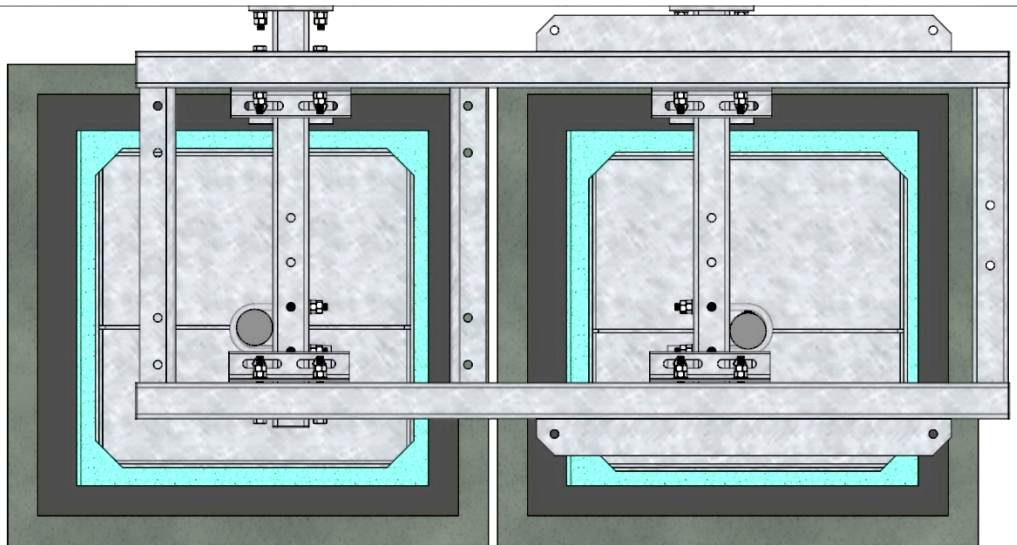
---

**i** set the frame for equipment(pos25) over beams

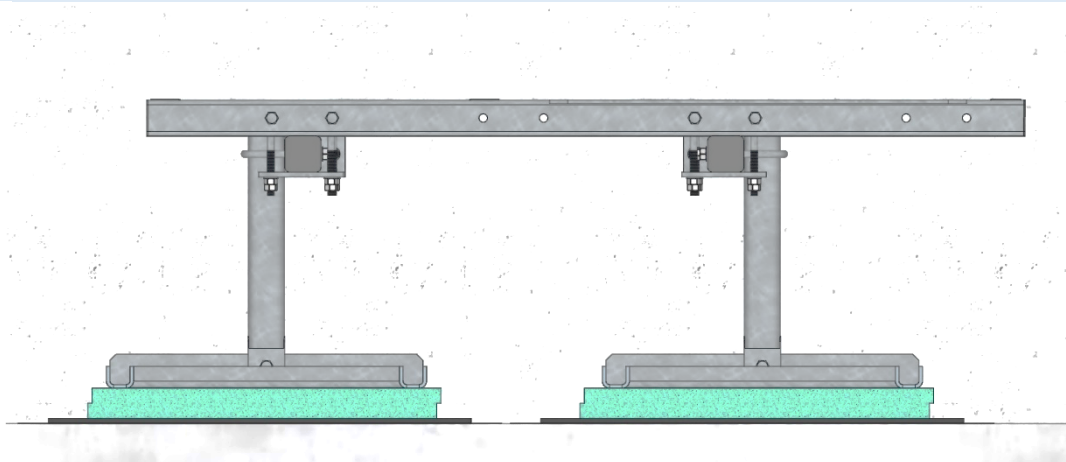


## 7. LAYOUT DRAWING

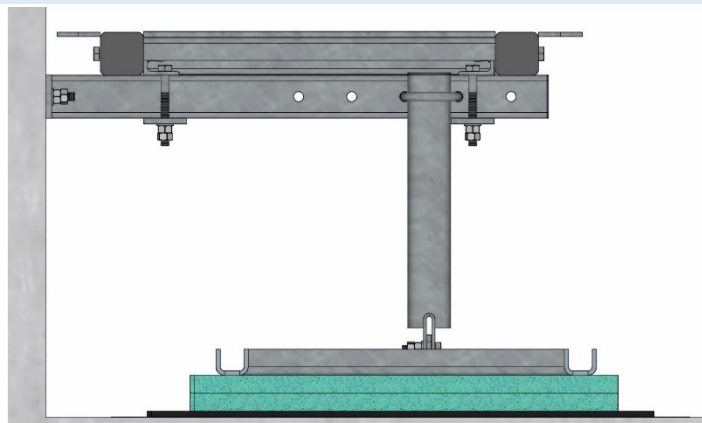
**i** Top view



**i** Front view



**i** Side view





## 8. RRU SUPPORT - OPTIONAL

**i** Install RRU-support **GR120-13-P35** on the side of the GR129-01 steel platform using 4x M12x100

Note: order separately

