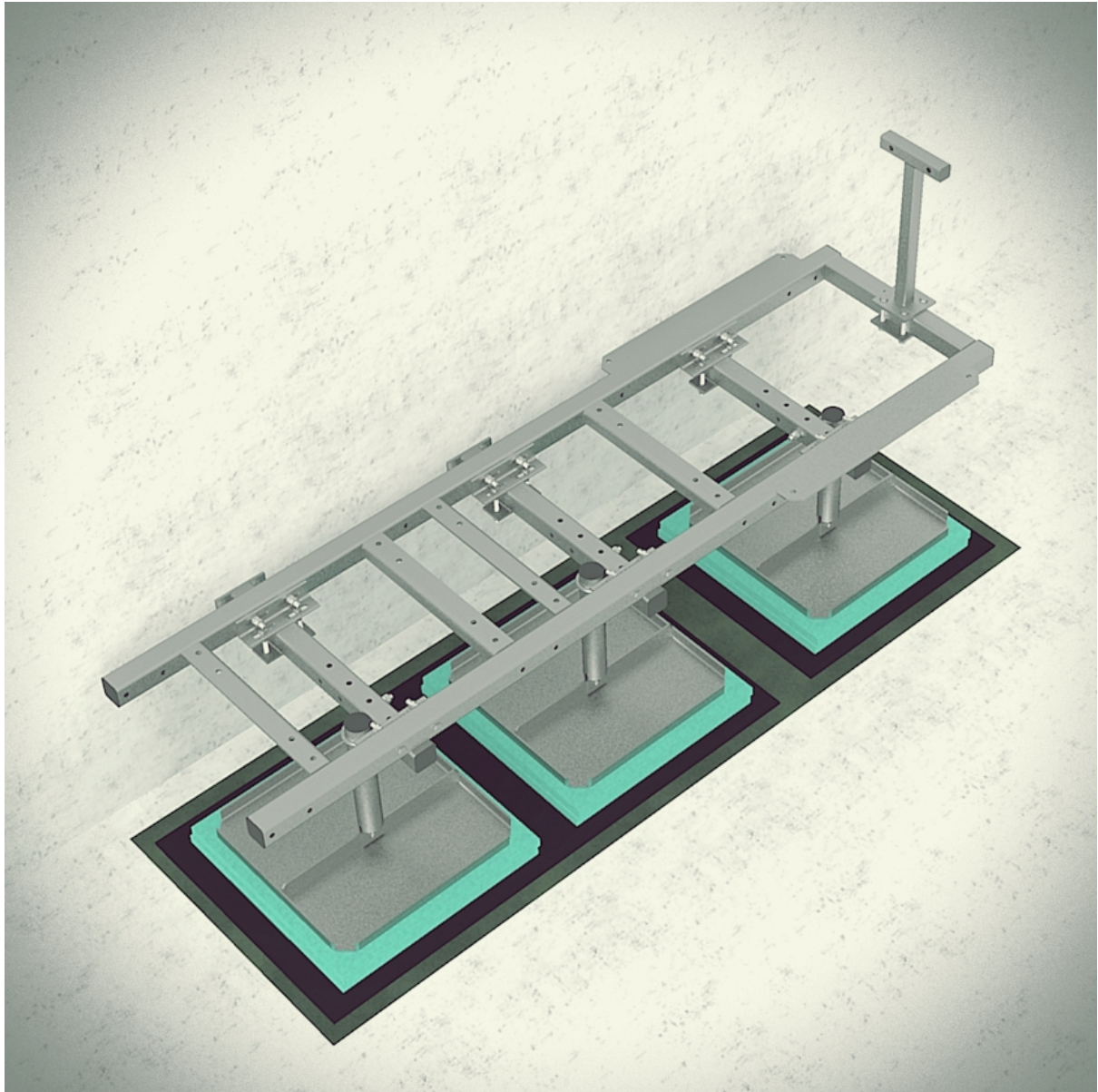


GR 129-02

RAMME FOR 3STK RU/LR 2,16M

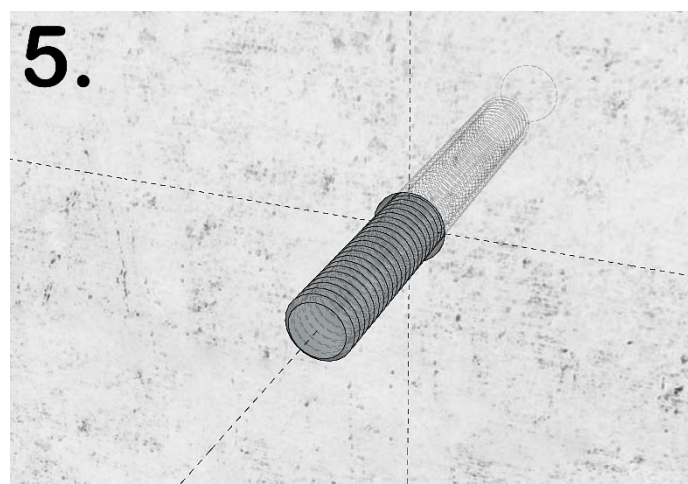
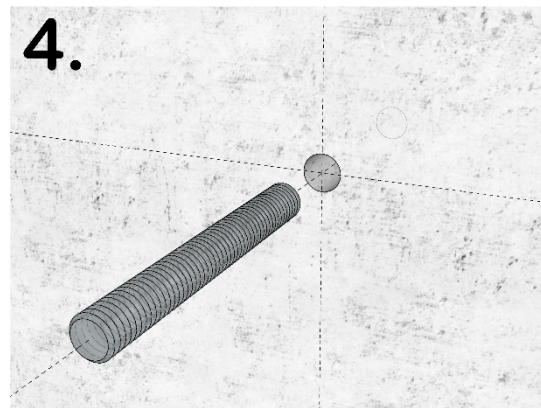
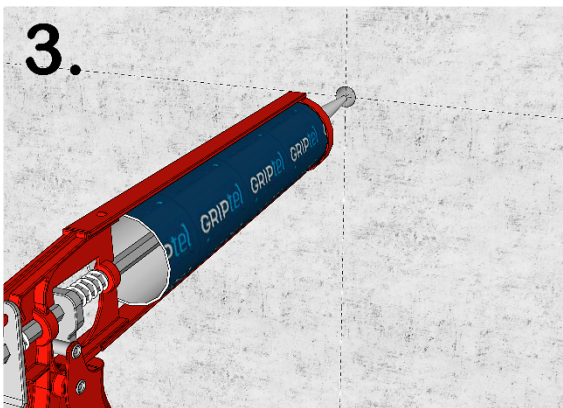
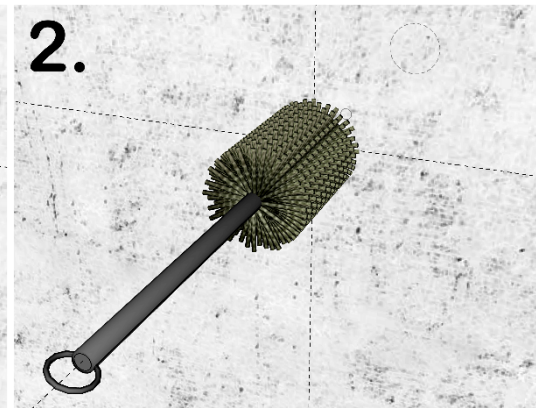
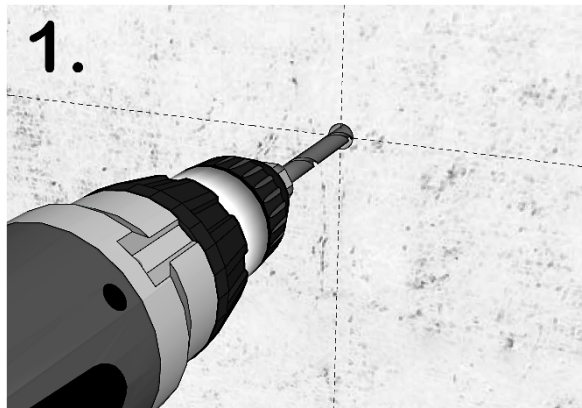
OVERVIEW



1. PREPARING FOR THE INSTALLATION

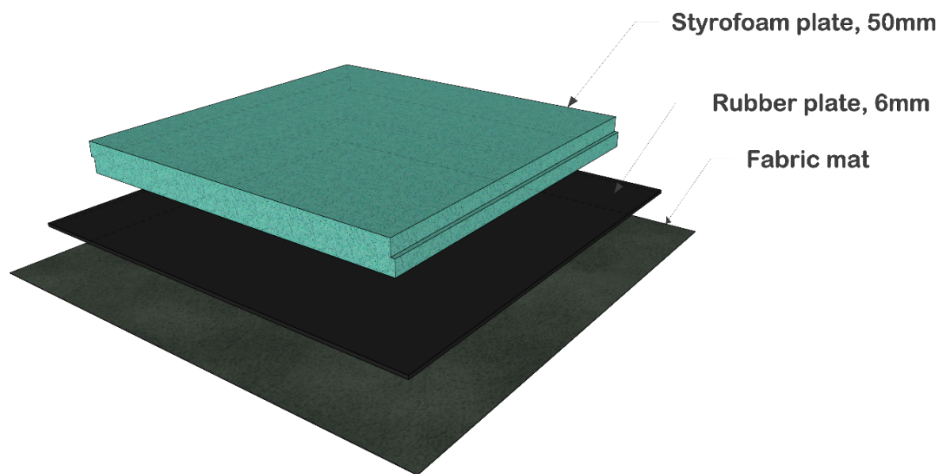


1. Drill hole to specified diameter and depth
2. Blow out the dust and clean dust and debris using brushing
3. Inject adequate MULTICOMPOUND/ Order from our web-shop: "[Pluggmasse/Pluggmasse MSC](#)"
(if the type of the wall requires, use appropriate anchors/ Order from our web-shop: "[SIHYLSTER](#)")
4. Insert threaded rod and cut excess part of the stud



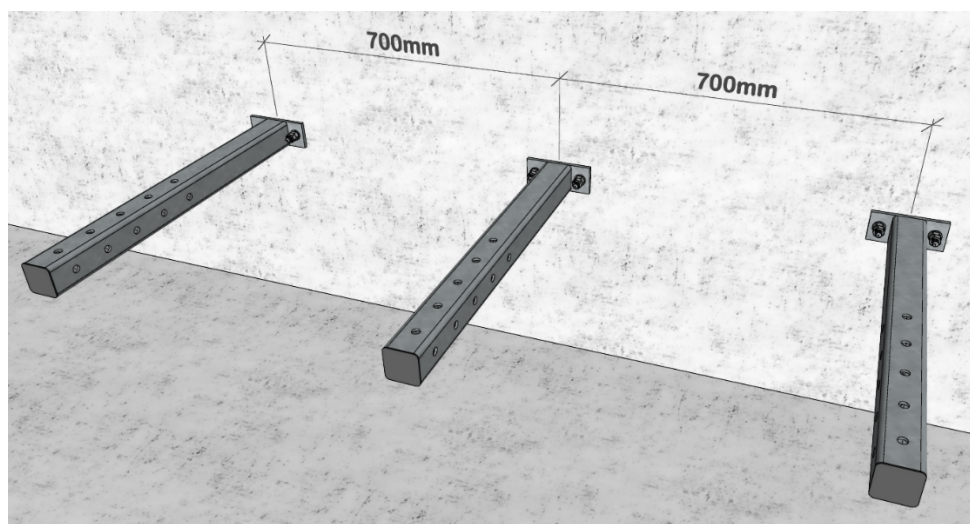
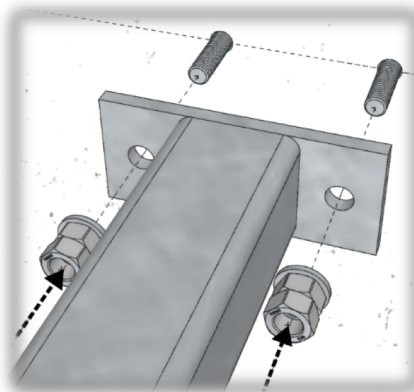
2. PREPARE FLORING

i Protect the surface from the damaging using Styrofoam plate, rubber surface and fabric mat below each supporting plate



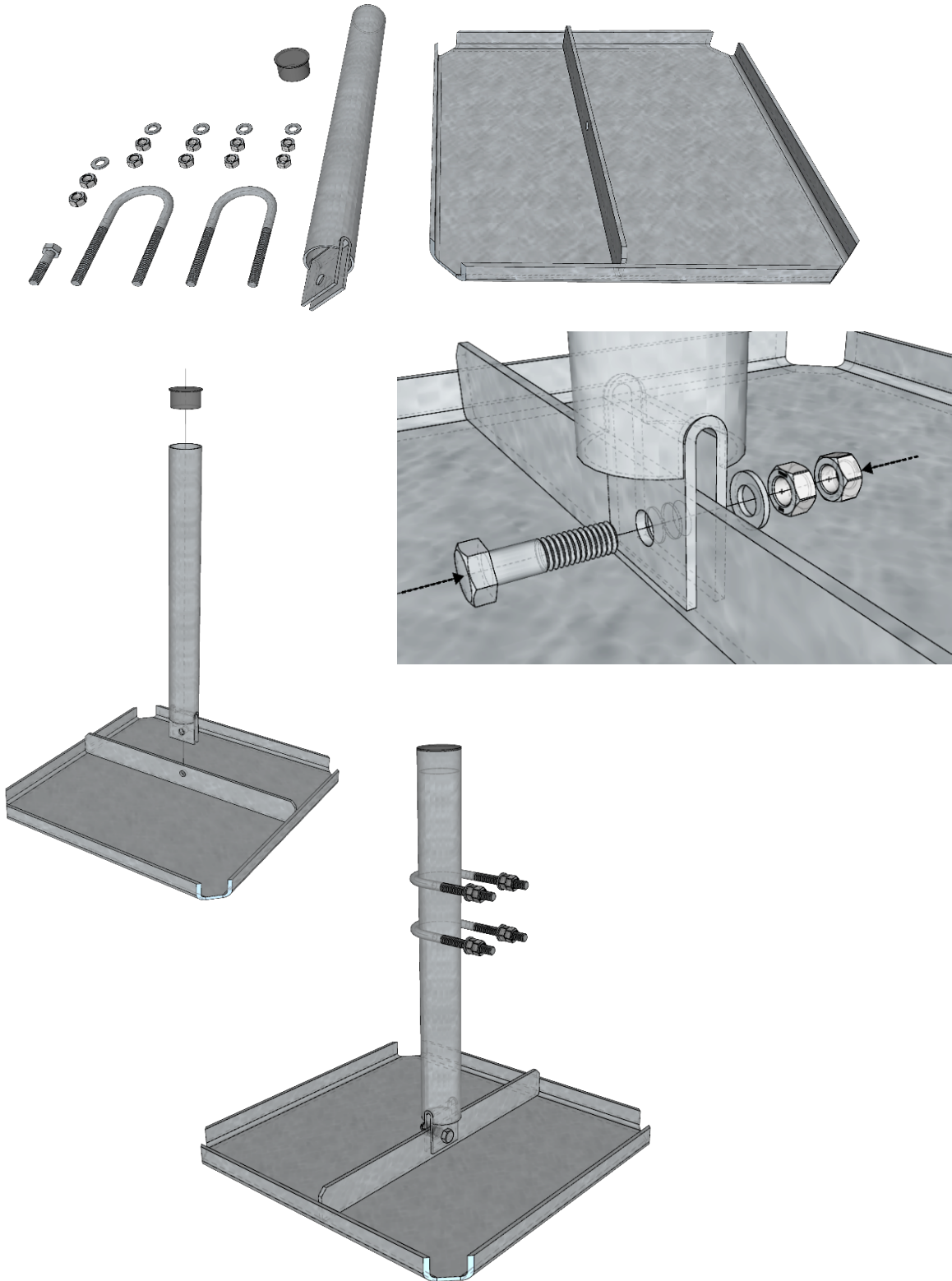
3. SUPPORTING HORIZONTAL BEAM

i Install 3x horizontal beam **GR120-04-P15** on the prepared chemical anchors on the wall;
(Recommended: Distance between three beams 700mm for Platform GR129-02)



4. Lastfordelende plate m. Ø60 rør - L=600mm; GR120-11-P19

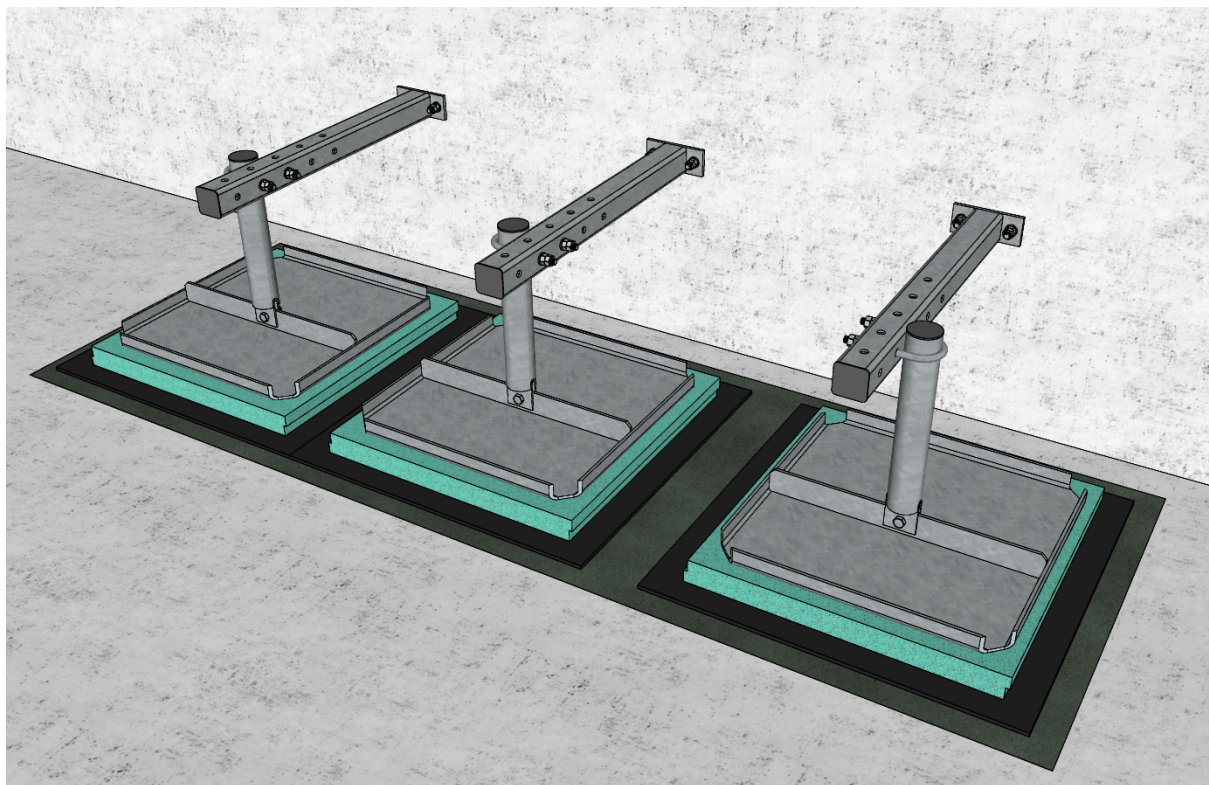
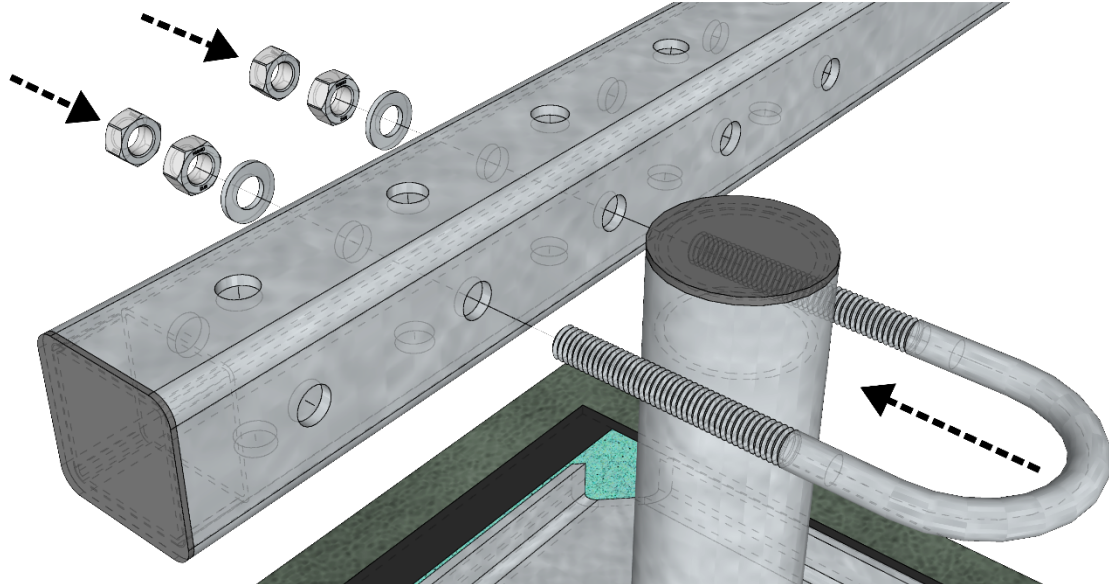
- i** Place the central tube to the vertical position on the base frame;
Cut excess part of the tube after installation;



5. VERTICAL SUPPORTS

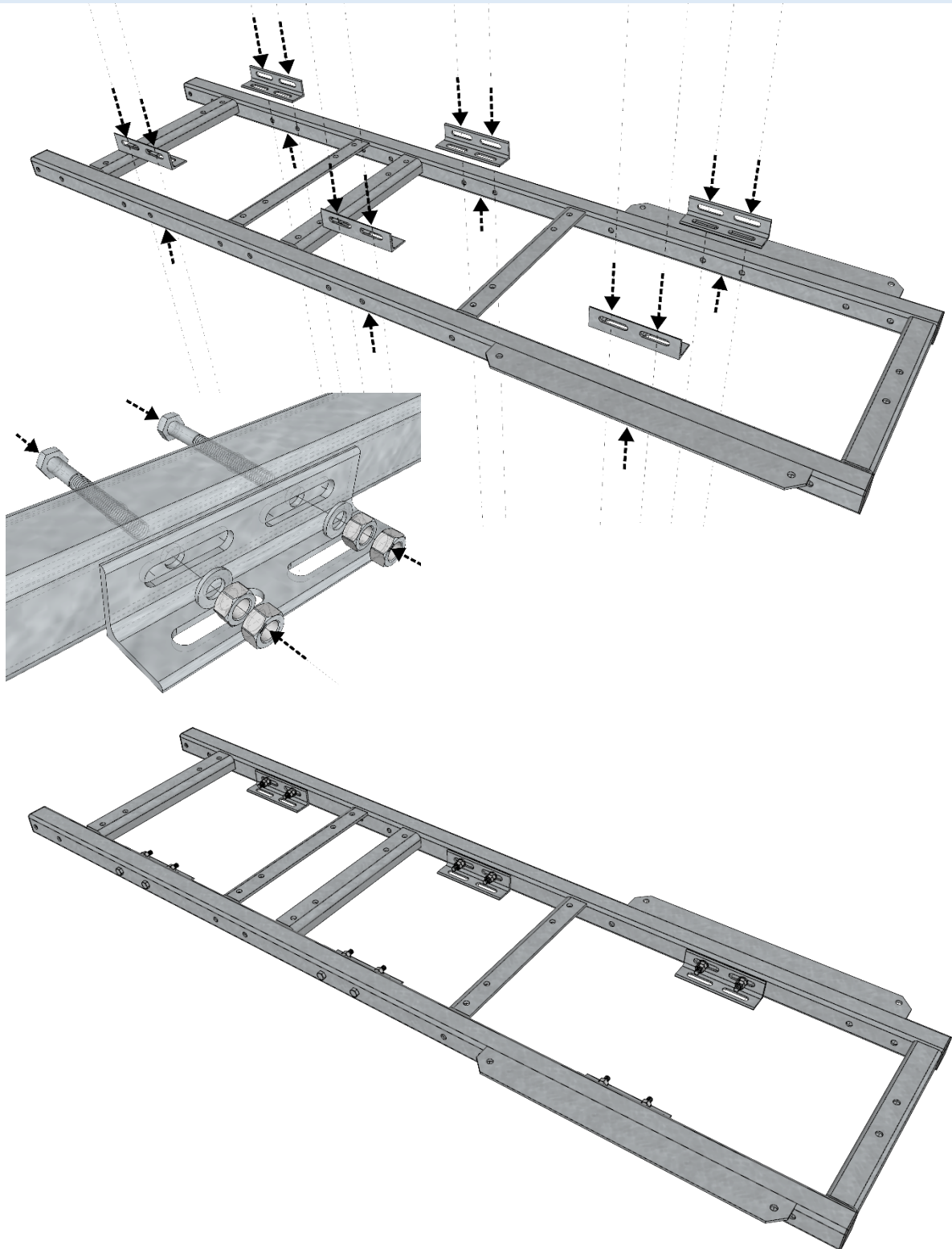
i Attach 3x **GR120-11-P19** vertical supports with mounting plate to horizontal beams **GR120-04-P15**
(Exact position will be determined during installation)

Supporting pipes needs to be cut and level with top of the horizontal supporting beam



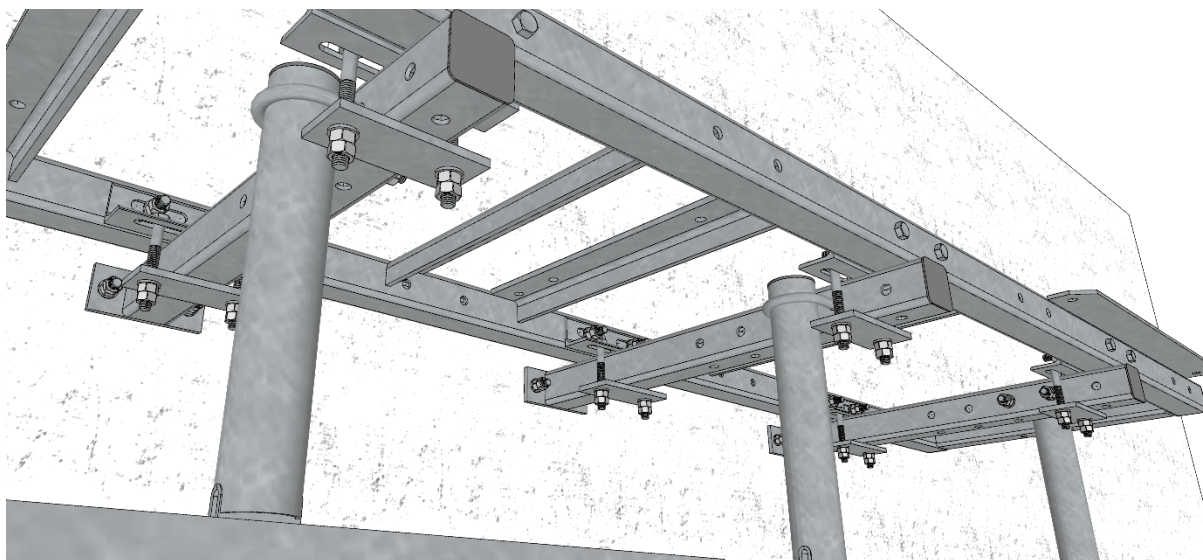
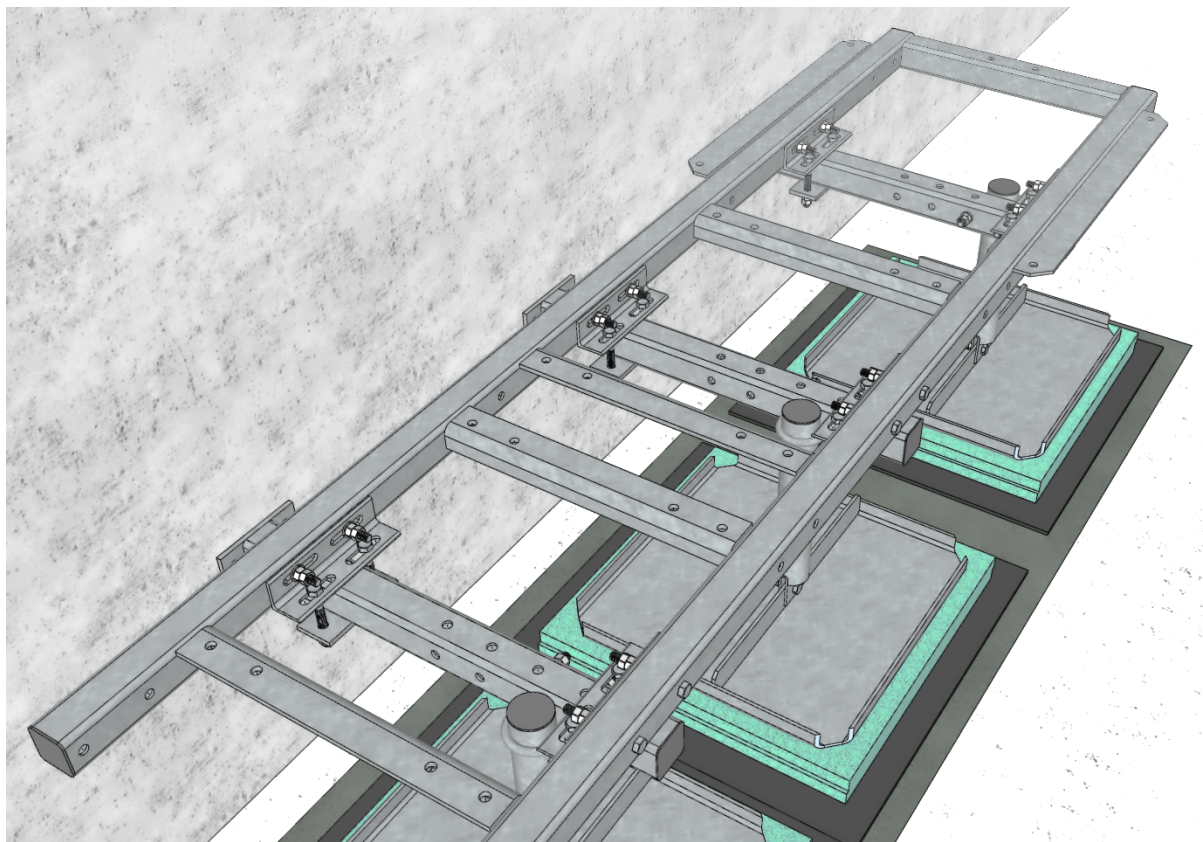
6. EQUIPMENT FRAME

- i** Prepare frame **GR120-12-P25** by adding 4x fixing brackets **GR120-04-P60** using 12x M12x100 bolts
(Distance between fixing brackets should follow distance between horizontal beams – 700mm)



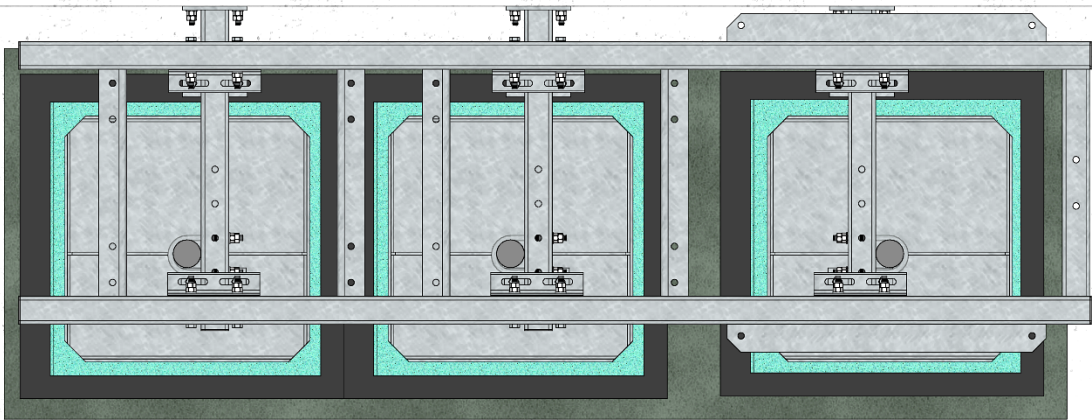
MOUNTING INSTRUCTION

i set the frame for equipment(pos25) over beams

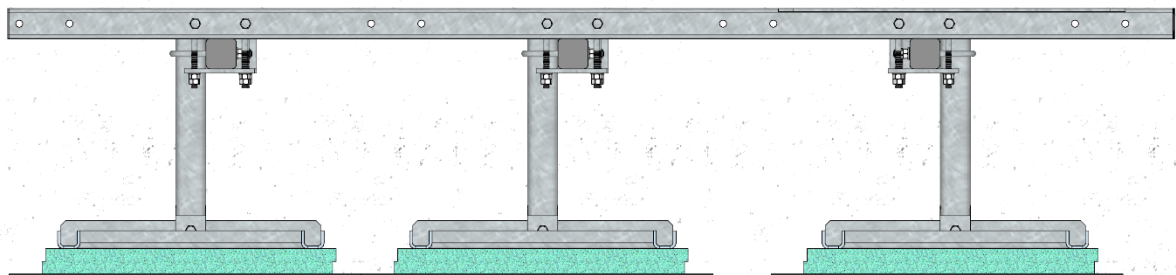


7. LAYOUT DRAWING

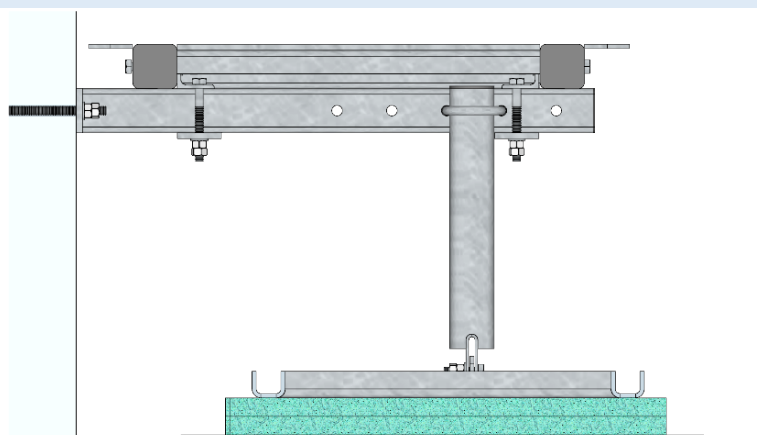
i Top view



i Front view



i Side view



8. RRU SUPPORT - OPTIONAL

i Install RRU-support **GR120-13-P35** on the side of the GR129-02 steel platform using 4x M12x100

Note: order separately

