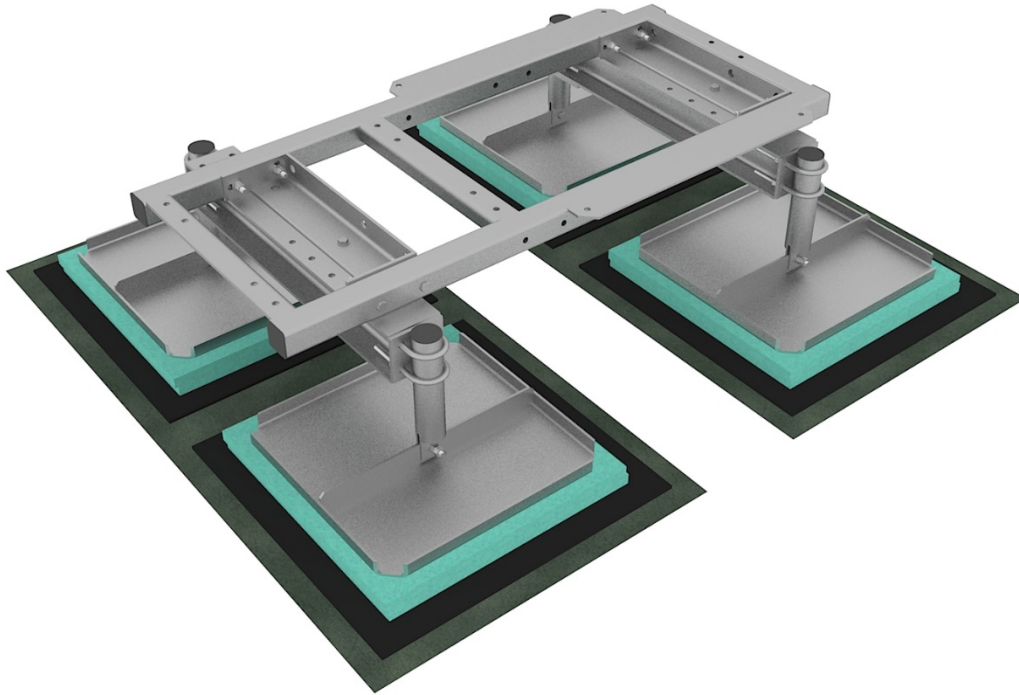


GR 129-18

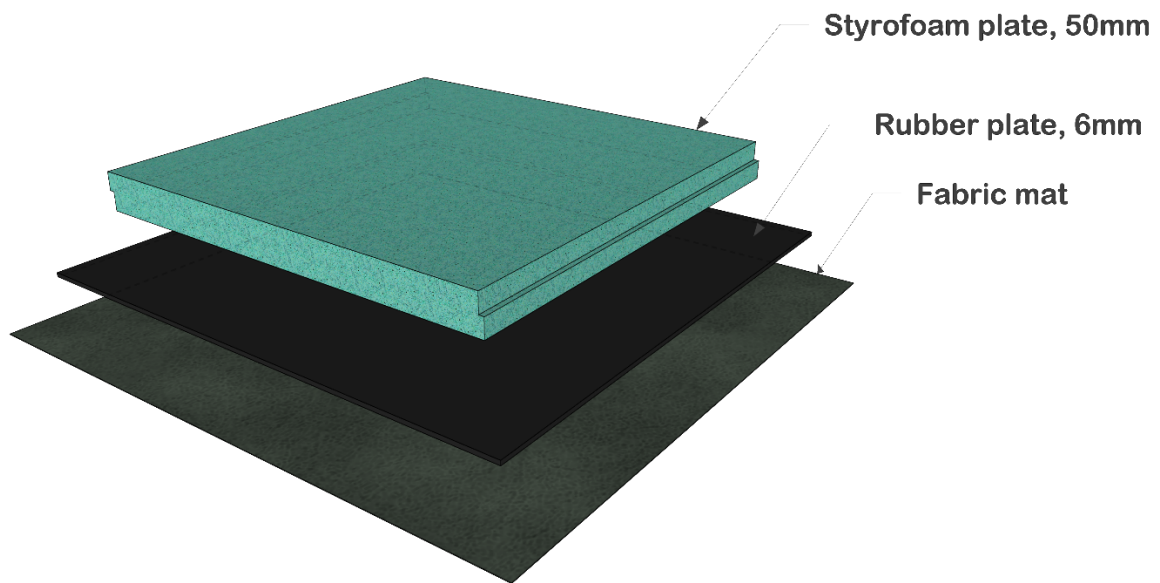
ODU RAMME PÅ TAK 2 STK BJELKER 0.8M

OVERVIEW



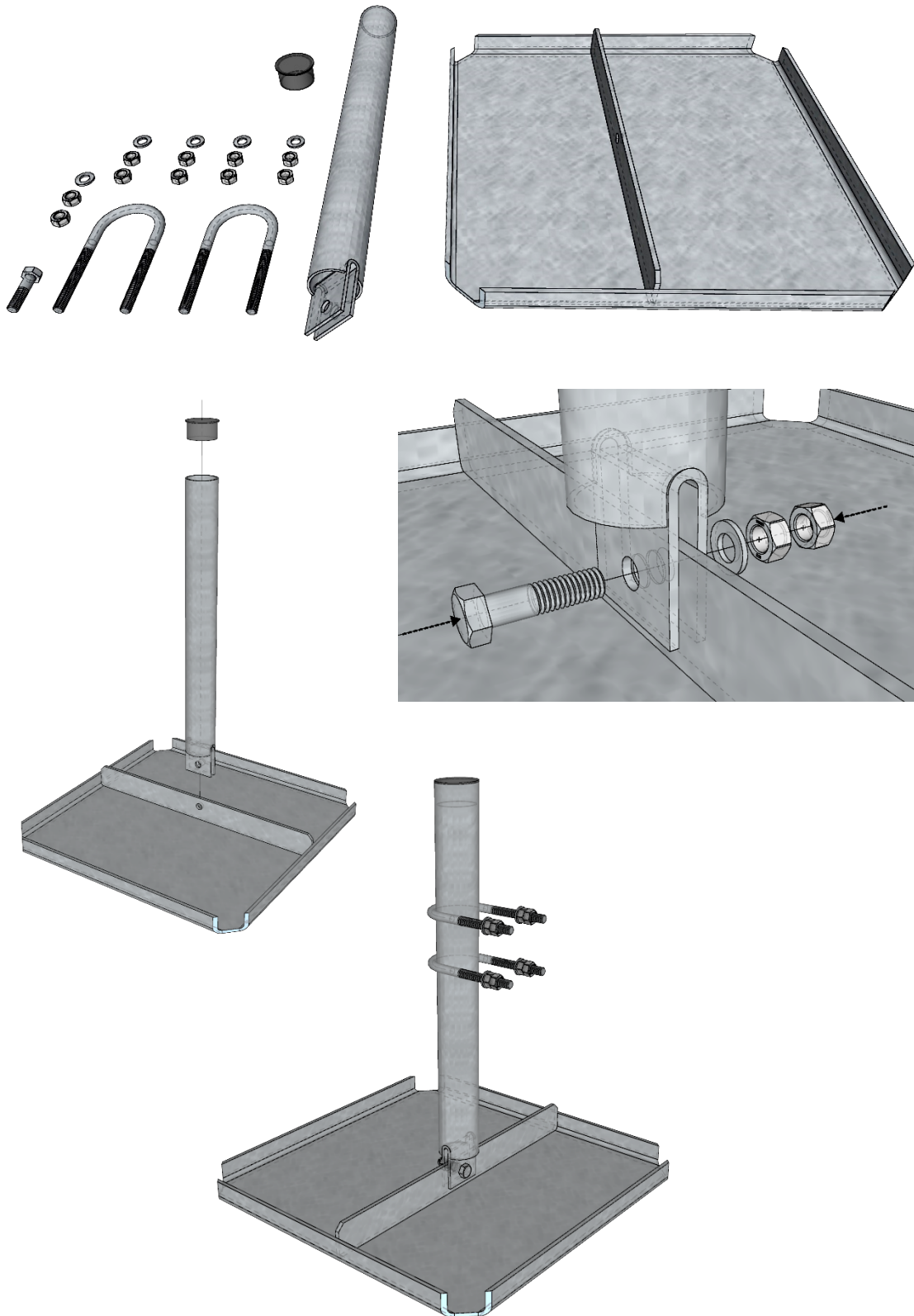
1. PREPARE FLORING

i *Protect the surface from the damaging using Styrofoam plate, rubber surface and fabric mat below each supporting plate*



2. Lastfordelende plate m. Ø60 rør - L=600mm; GR120-11-P19

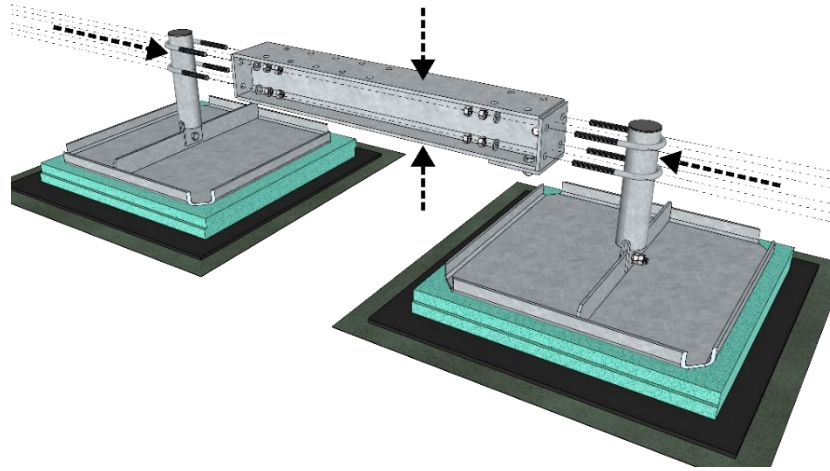
- i** Place the central tube to the vertical position on the base frame;
Cut excess part of the tube after installation;



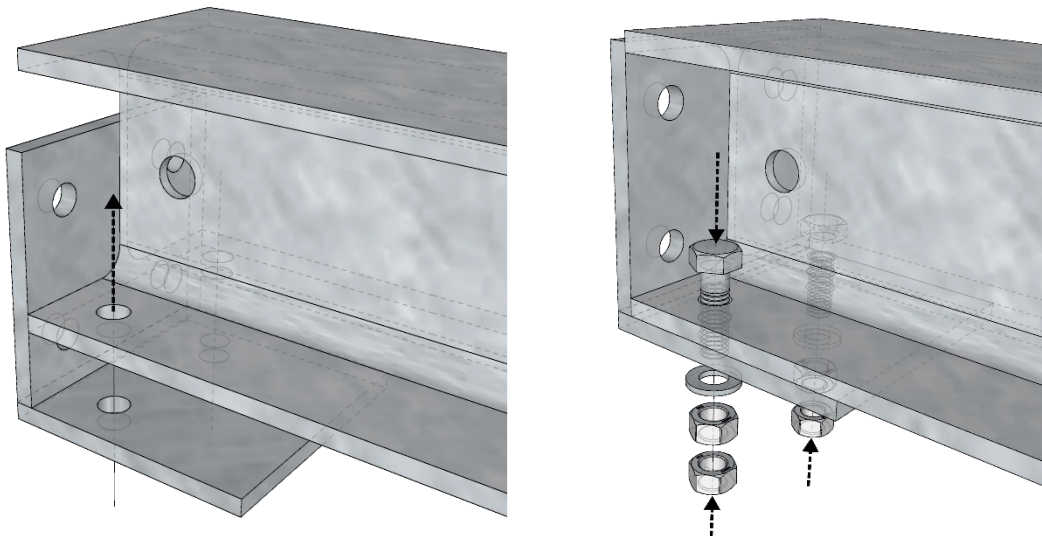
3. VERTICAL SUPPORTS

- i** Attach 4x **GR120-11-P19** vertical supports to horizontal beams **GR120-10-P01**
(Exact height of the main horizontal beam will be determined during installation)

Supporting pipes needs to be cut and level with top of the horizontal supporting beam

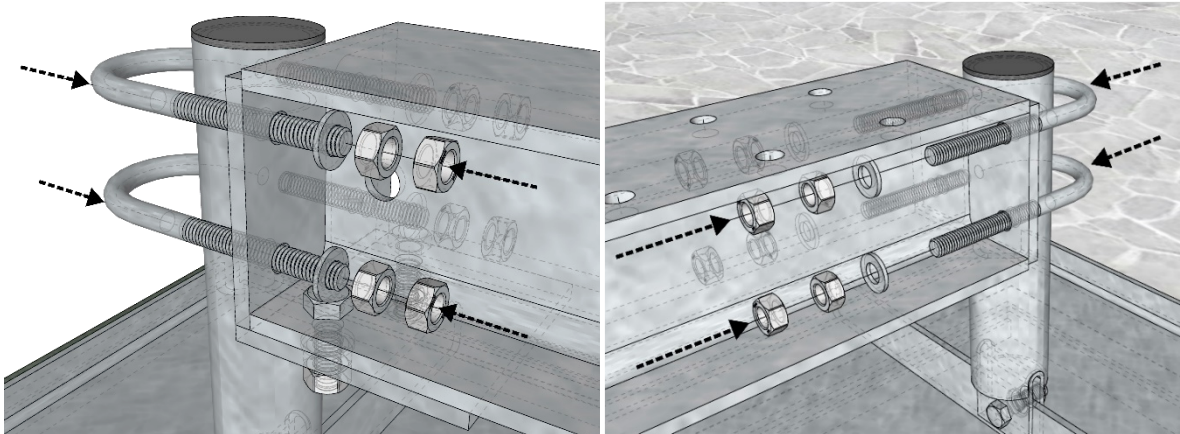


- i** Install 1x back support **GR120-16-P53** on each end of the main horizontal beam using M12x40 bolts

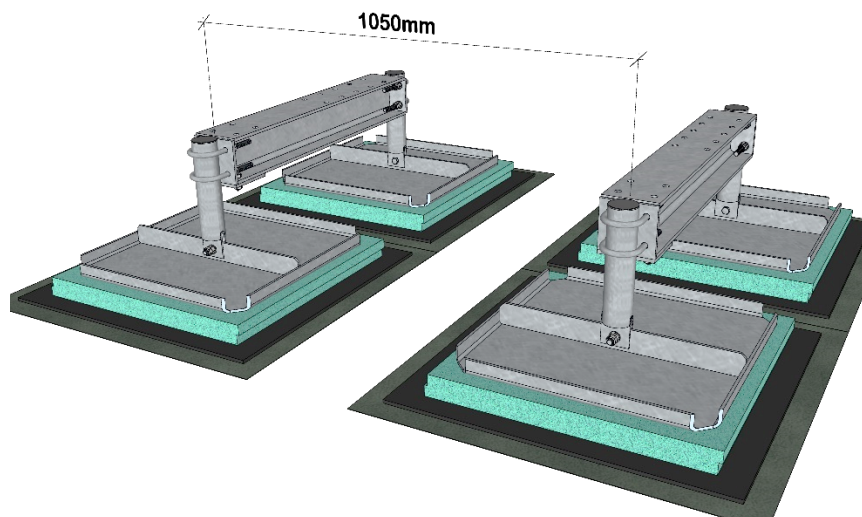


MOUNTING INSTRUCTION

i Make connection between vertical supports and main horizontal beams using prepared U-bolts

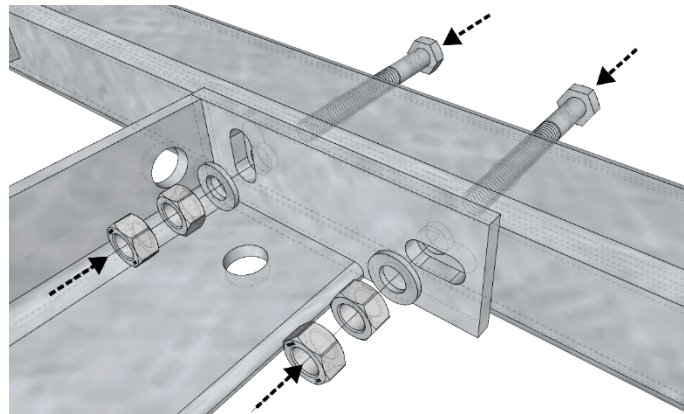
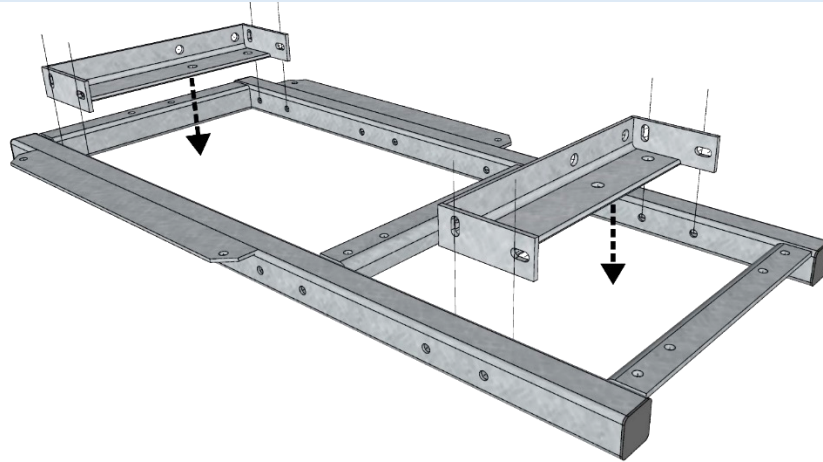


i Recommended distance between 2x main beams should be 1050mm (see drawing below)



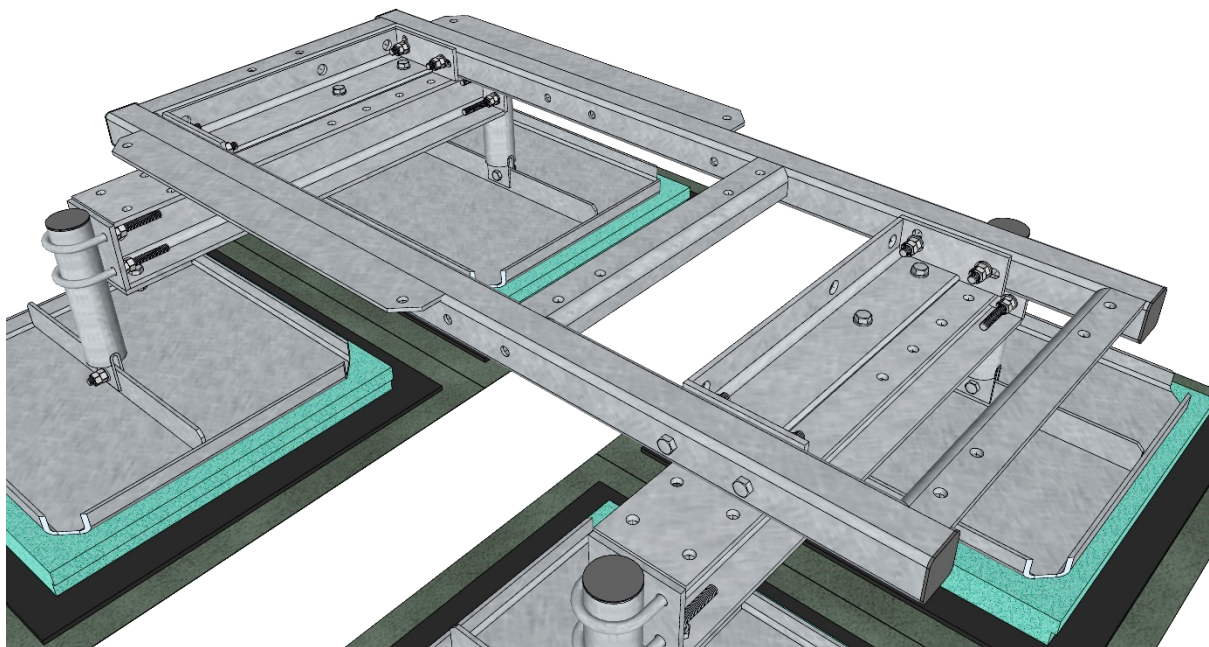
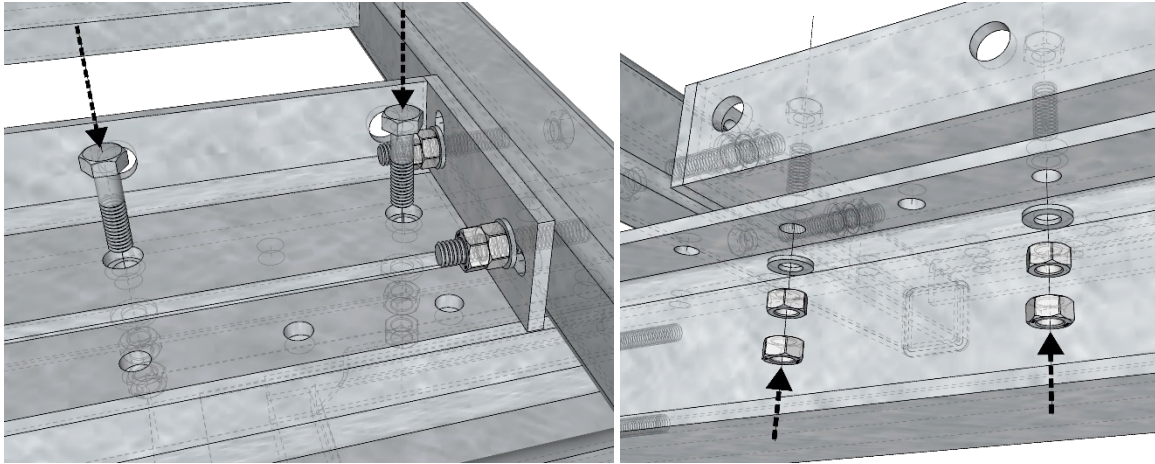
4. EQUIPMENT FRAME

- i** Prepare frame **GR120-12-P26** by adding 2x fixing brackets **GR120-10-P09** and support them using 8x M12x100 bolts
(Distance between fixing brackets should follow recommended distance between main horizontal beams – 1050mm)



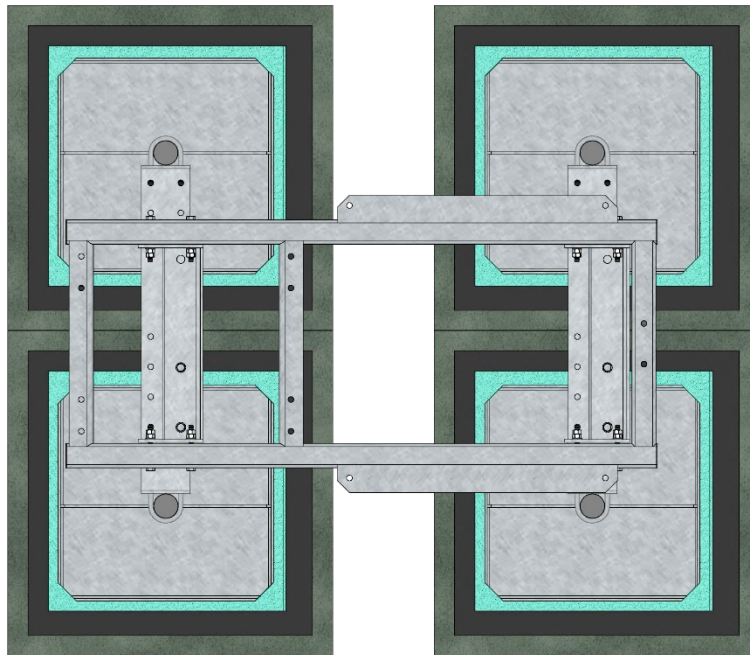
MOUNTING INSTRUCTION

i set the frame for equipment over beams using 4x M12x40 bolts

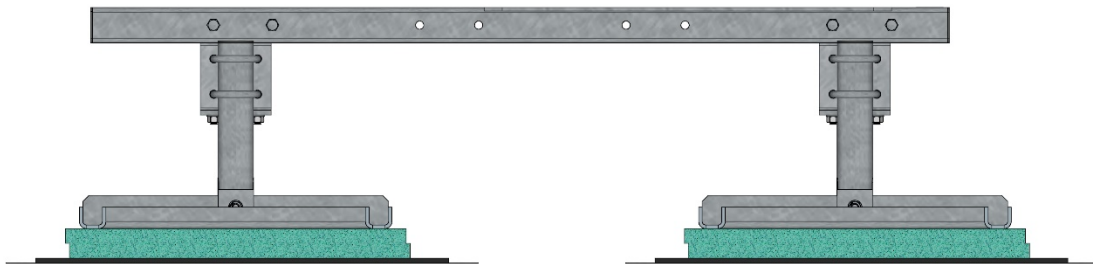


5. LAYOUT DRAWING

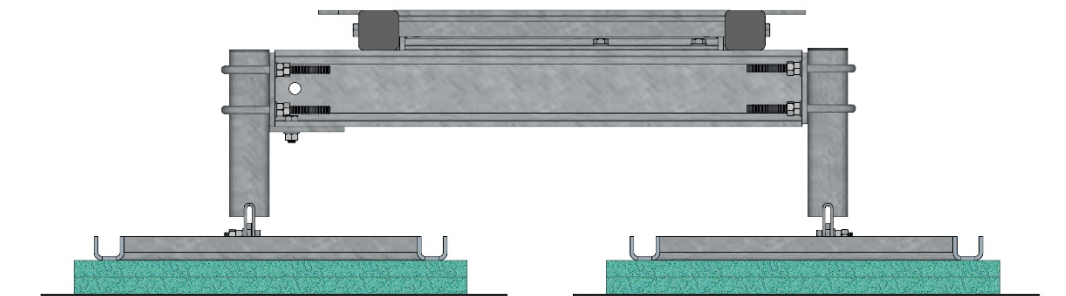
i Top view



i Front view



i Side view



6. RRU SUPPORT - OPTIONAL

i Install RRU-support **GR120-13-P35** on the side of the **GR129-18** steel platform using 4x M12x100

Note: Order separately

